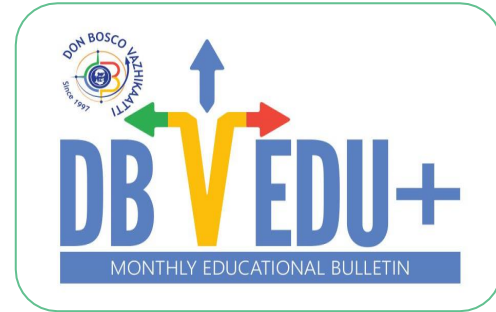


REHABILITATION SCIENCES

Road to Recovery...





COURSE DESCRIPTION

Suppose you are interested in solving people's problems and love to help them live a smooth, happy, and independent life. In that case, the field of Rehabilitation Sciences will help you carve a successful career with job satisfaction. There is a wide range of options available in rehabilitation courses. Rehabilitation is to help people reduce their disabilities through discussions, exercises, and therapies.

Rehabilitation Science is all about treating patients who are temporarily or permanently disabled and can't do their everyday tasks because of injuries in their everyday lives. Professionals in this field help people regain their independence and mobility by using purposeful activities and exercises. It helps in learning prevention aspects of disabilities to build professionals with the knowledge and skills to become effective Officers, Counsellors, Supervisors, and Therapists.

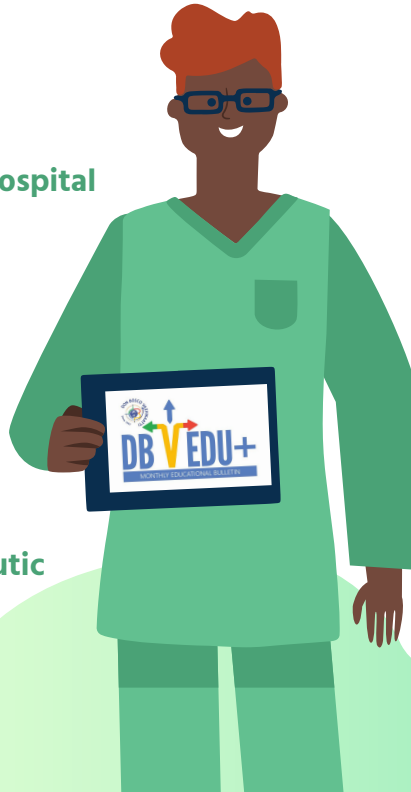
Available Degrees

DEGREE	DURATION	ELIGIBILITY
B.P.O. (Bachelor in Prosthetics and Orthotics)	4.5 Year	10+2 with PCM/PCB
B.P.O. (Bachelor in Prosthetics and Orthotics)	4 Year	10+2 with PCM/PCB
B.R.Sc. (Bachelor in Rehabilitation Science)	3 Year	10+2 with PCM/PCB
B.A./B.Com./B.Sc. (SE) (Bachelor of Art/Commerce/Science in Special Education)	4 Year	10+2 with Any Stream
B.Sc. (Spl.Ed.&Reh.) (Bachelor of Science in Special Education and Rehabilitation)	3 Year	10+2 with PCM/PCB

CAREER PROSPECTS & SPECIALIZATIONS

P
R
O
S
P
E
C
T
S

- Higher Studies in Respective field
- Indian Civil services
- State/Central Civil Medical Service
- Work with NGOs
- Speciality Consultant in Corporate Hospital
- Research and Academics
- Clinical Research
- Technical Writing
- Special Education
- Clinical / Therapeutic Rehabilitation
- Psychosocial Rehabilitation
- Vocational Rehabilitation
- Rehabilitation Management & Administration
- Work at Hospitals / Clinic / Therapeutic Centres/ Special Schools



- ❖ Special Education in Visual Impairment
- ❖ Deaf Blind
- ❖ Hearing Impairment
- ❖ Intellectual Disability
- ❖ Special Education & Rehabilitation
- ❖ Mobility Science
- ❖ Prosthetics & Orthotics
- ❖ Audiology & Speech Language Pathology
- ❖ Clinical Psychology
- ❖ Rehabilitation Psychology
- ❖ Rehabilitation Science

SPECIALIZATIONS

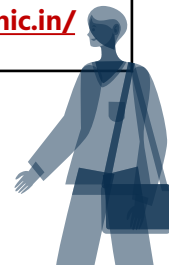
Rehabilitation Sciences Entrance Exams after 12th

S.NO.	EXAM NAME	COURSE & INSTITUTION INFO	WEBSITE
1	PARA-CET 124 (Paramedical Common Entrance Test)	BASLP, BOT & BPO Programs at affiliated colleges of Guru Gobind Singh Indraprastha University, Delhi	http://www.ipu.ac.in/
2	AIISH-ET (AIISH Entrance Test)	BASLP Degree at AIISH, Mysore & NSCBMC, Jabalpur and other allied institutions	https://www.aiishmysore.in/
3	PHARM UG, CET Optom, SLPCEST	B.Sc. Nursing, BPTH CET for BASLP at Bharati Vidyapeeth Pune-Maharashtra	https://bvuniversity.edu.in/
4	IMAT (Indian Medical Aptitude Test)	BASLP at Institute of Health Sciences, Bhubaneswar-Orissa	https://www.ihindia.org/
5	WB-JENPAS UG (West Bengal Joint Entrance for Nursing, Physiotherapy, Audiology at University of Health-UG)	BASLP & BHA Degree Courses across Affiliated Colleges of West Bengal University of Health Sciences Kolkata	https://wbjeeb.nic.in/
6	NEET (National Entrance Test)	BASLP Program at NIEPMD, Chennai	http://www.svnirtar.nic.in/
7	SRU-EE Group A (SRU Entrance Exam)	BASLP at Sri Ramachandra Medical College and Research Institute, Chennai	https://www.sriramachandra.edu.in/



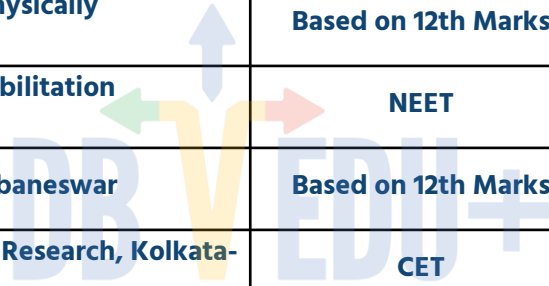
RANK	UNIVERSITY/INSTITUTE	ENTRANCE PROCESS	WEBSITE
1	All India Institute for Speech & Hearing, Mysore-Karnataka	AIISH-ET	https://aiishmysore.in/
2	Bharati Vidyapeeth, Pune-Maharashtra	BVP-CET	https://bvuniversity.edu.in/
3	Institute of Health Sciences, Bhubaneswar-Orissa	DSSMRU-EE	https://www.ihsindia.org/
4	Ayushmati Institute of Post Graduate Medical Education and Research (AIPGME&R), Chandrapur	DSMRU-EE	http://www.wbuhs.ac.in/
5	Shakuntala Mishra National Rehabilitation University (D.S.M.N.R.U.), Lucknow-Uttar Pradesh	DSMRU-EE	https://dsmsru.nic.in/
6	West Bengal University of Health Sciences	WB-JENPAUH	https://wbuhs.ac.in/
7	National Institute for Empowerment of Persons with Multiple Disabilities (NIEPMD), West Bengal-Tamilnadu	BASLP-NEET	http://niepmd.tn.nic.in/
8	Post Graduate Institute of Medical Education and Research (PGIMER), Chandigarh	NEET	https://pgimer.edu.in/
9	College of Health Sciences, Manipal (MAHE), Manipal-Karnataka	Based on 12th Marks	https://manipal.edu/
10	1All Yavar Jung National Institute of Speech and Hearing Disabilities (Divyangjan), Secunderabad-Telangana	Based on 12th Marks	http://www.nivhsrsrc.nic.in/

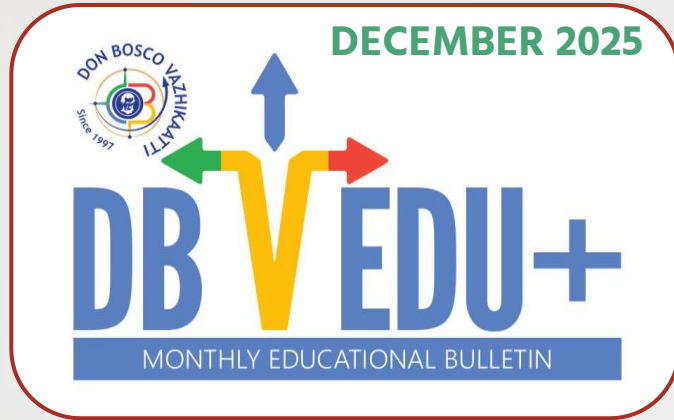
Top 10 Bachelor of Audiology and Speech Language Pathology (BASLP) Colleges
with Ranking, Admission Processes, and Websites



Top 8 Bachelor of Prosthetics and Orthotics (BPO) Colleges with Ranking, Admission Processes, and Websites

RANK	UNIVERSITY/INSTITUTE	ENTRANCE PROCESS	WEBSITE
1	Swami Vivekanand National Institute of Rehabilitation Training and Research, Cuttack-Orissa	CET	http://www.svnirtar.nic.in/
2	Pandit Deendayal Upadhyaya Institute for the Physically Handicapped, New Delhi	Based on 12th Marks	http://www.iphnewdelhi.in/
3	All India Institute of Physical Medicine and Rehabilitation (A.I.I.P.M.R.), Mumbai-Maharashtra	NEET	http://aiipmr.gov.in/
4	National Institute of Rehabilitation Science, Bhubaneswar	Based on 12th Marks	http://www.niih.nic.in/
5	National Institute of Rehabilitation Training and Research, Kolkata-West Bengal	CET	http://www.niohkol.nic.in/
6	Dr. Shakuntala Misra National Rehabilitation University (DSMNRU), Lucknow-Uttar Pradesh	DSMRU-EE	https://dsmsru.nic.in/
7	Mobility India, Bangalore-Karnataka	Based on 12th Marks	https://mobility-india.org/
8	Christian Medical College (CMC), Vellore-Tamil Nadu	Based on 12th Marks	https://www.cmch-vellore.edu/





**DON BOSCO VAZHKAATTI,
46, Siruvallur Road, Perambur,
Chennai, Tamil Nadu - 600 011.**

**Phone: +91-9385201459, 044-26704491
Website: www.donboscovazhikaatti.com**

